

Solutions for Wind Energy



Customer Driven • Solution Focused . . . we've got you covered!®



Supplier Partners for Wind Energy Applications

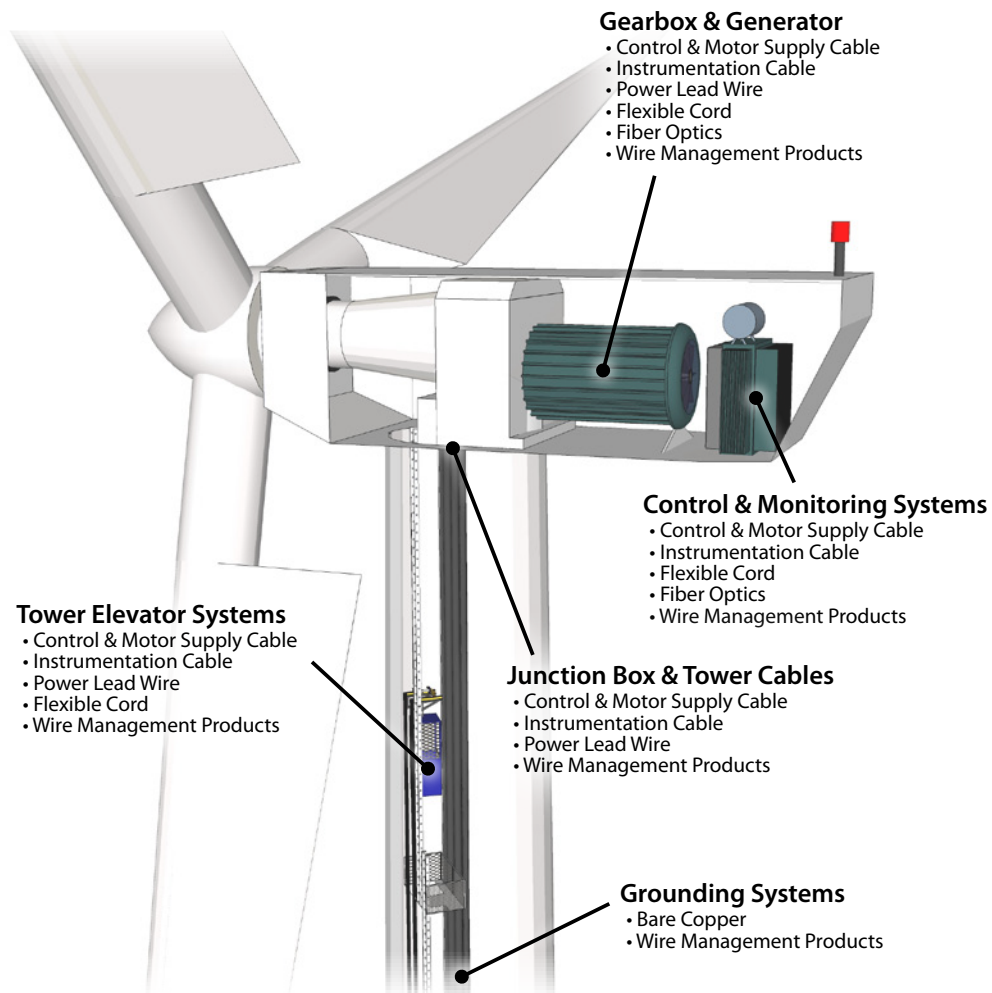
- Alpha Wire
- Belden
- Burndy
- Coleman Cable
- C&M Corp
- General Cable
- HellermannTyton
- Helukabel
- Heyco
- Judd Wire
- Lutze
- Panduit
- Optical Cable Corp.
- Southwire

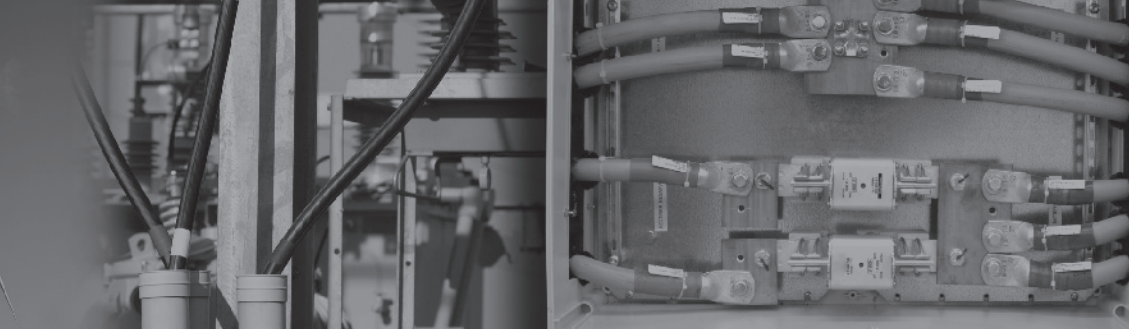
IEWC stocks a full line of wire, cable and wire management products for manufacturers in every wind energy application. Understanding the unique requirements and harsh environments of the wind power industry, IEWC supplies products from the best names in the industry, providing you with the most reliable and cost-effective wire and cable components available.

The right products, delivered when you need them

With local expertise and a global network of distribution centers, IEWC provides the quality and the service you need to get the job done right. Contact IEWC today to learn more about our solutions for wind energy applications.

Wind Energy Applications:





Power Lead Wire

DLO - XLPO

600V & 2000V, 125°C
XLPO Insulation
Approvals: VW-1

DLO - CPE

2000V, 90°C
EPR Insulation / CPE Jacket
Approvals: RHH/RHW, R90, VW-1, FT4

THHN

600V, 90°C
PVC/Nylon Insulation
Approvals: THWN-2, T90/TWN75, VW-1

UL 3271

600V, 125°C
XLPE Insulation
Approvals: CL1251, VW-1, FT1

UL 3340/3374

600V, 150°C
EPDM Insulation
Approvals: CL1254

UL 1430/1431

300V/600V, 105°C
XLPVC Insulation
Approvals: REW, VW-1

DIN/VDE Lead Wire

1000V, -50°C to 90°C
Multiple constructions available
Shielded and Flexible constructions
Approvals: UL AWM

Flexible Cord

SJOOW & SOOW

300V & 600V, -50°C to 105°C
EPDM Insulation / CPE Jacket
Approvals: FT1

SJEOOW & SEOOOW

300V & 600V, -70°C to 105°C
TPE Insulation / TPE Jacket
Approvals: FT2

SJTOW & STOW

300V & 600V, -40°C to 90°C
PVC Insulation / PVC Jacket
Approvals: FT2, <HAR>, VDE

Control & Motor Supply Cable

WTTC - Wind Turbine Tray Cable

1000V, -40°C to 90°C
Multiple constructions available
Shielded and Continuous-flex constructions
Approvals: TC-ER, FT4

TC - Tray Cable

600V, 90°C
Multiple constructions available
Shielded and Flexible constructions
Approvals: VW-1, FT4

DIN/VDE Cable

1000V, -50°C to 90°C
Multiple constructions available
Shielded and Flexible constructions
Approvals: UL AWM, FT1, FT4

Instrumentation Cable

WTTC - Wind Turbine Tray Cable

1000V, -50°C to 125°C
Multiple constructions available
Shielded and Continuous-flex constructions
Approvals: PLTC, TC, FT1

PLTC - Power Limited Tray Cable

300V, 105°C
Multiple constructions available
Shielded and Flexible constructions
Approvals: FT4

Bare Copper

Multiple constructions available
Solid and Stranded
Wire, Rope, Flat and Tubular constructions
Approvals: ASTM

Fiber Optics

Multiple constructions available
Singlemode and Multimode
Loose Tube and Tight-buffered
Armored, Breakout and Composite constructions

Wire Management Products

- Cable Ties
- Clips, Mounts & Accessories
- Lugs
- Copper & Fiber Connectors
- Heat Shrink Tubing
- Heat Shrink Boots & Joints
- Convoluted Tubing & Conduit
- Cable Grips & Strain Reliefs
- Identification Products

Certified & Compliant



Many other wire, cable and wire management products available from stock.
Consult your IEWC Sales Representative for detailed specifications on each product.



Global Stocking Locations

UNITED STATES

Boston, MA
AS9100, Rev. B Certified
978-422-6000
800-225-0802
F: 978-422-6040

Cleveland, OH

440-835-5601
800-321-5601
F: 440-835-5971

Dallas, TX

972-801-9787
800-474-9984
F: 972-801-9789

Greenville, SC

864-234-5322
800-480-5322
F: 864-234-1020

Milwaukee, WI

262-782-2255
800-966-6325
F: 262-782-2821

Phoenix, AZ

480-922-6900
800-989-9502
F: 480-922-0346

San Francisco, CA

925-939-3600
866-472-9473
F: 925-686-4371

CANADA

Montreal, QC
514-956-5877
F: 514-956-0618

Toronto, ON

416-609-2050
866-303-6596
F: 866-303-6597

MEXICO

Aguascalientes, AG
+52 449 922 1200
800-439-2100
F: +52 449 146 4294

Monterrey, NL

+52 449 922 1200
800-439-2100
F: +52 449 146 4294

CHINA

Hong Kong, SAR
+86 512 6275 6668
800-828-2086
F: +86 512 6275 6663

Suzhou, Jiangsu

+86 512 6275 6668
800-828-2086
F: +86 512 6275 6663

GERMANY

Peter Augsten wire & cable GmbH
Division of IEWC
Frankfurt am Main
+49 (0) 6175 79791 0
F: +49 (0) 6175 79791 49

UNITED KINGDOM

Weston-super-Mare
+44 (0) 870 6091257
F: +44 (0) 870 6091258

Your Complete Interconnect Solutions Provider

IEWC® is an employee-owned company, incorporated in 1962. We are a premier stocking distributor of high-performance wire, cable and wire management products, with warehouses strategically located throughout the world.

www.iewc.com

IEWC is an ISO 9001:2008 registered company.
Boston, MA facility registered to AS9100, Rev. B.



Customer Driven • Solution Focused . . . we've got you covered!®